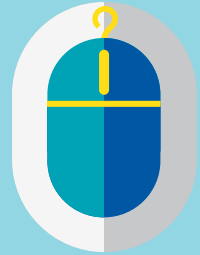


# Manage **your policy** **online** with **MyAviva**



Our online portal will help you to manage your Aviva policies in one secure, easy-to-use place at a time that suits you.

Using **MyAviva** can help you to plan your retirement and see the full potential of your pension investments – **good thinking from us, for you.**

## Activate your **MyAviva** account today and you'll be able to:

- Check your personal details
- Check your pension plan value and view your pension statements
- Research and manage your investment funds online
- Nominate a beneficiary
- Log in to view all your policies in one place
- Get 20% discount off all selected products
- Complete quotes and applications online
- Renew existing policies online
- Get Aviva advantages access for discounts and entry into prize draws.

## Use **MyAviva's** 'retirement planner' to:

- Estimate how much your pension pot could be worth
- See the different ways you could take your retirement income
- See how withdrawing your pension pot as cash could change your tax position
- Look at how changing your pension contributions could affect your pension pot.



Activate your **MyAviva** account today

[aviva.co.uk/myaviva](https://www.aviva.co.uk/myaviva)